

WELCOME TO CRUISING

Do you recognize this place?



PEGGY LUDLOW

902 434 5554

margaret.ludlow@premieregroup.com

Uniglobe Enterprise Travel Toronto ON

**Company present in 60 countries
across Americas, Europe,
Asia/Pacific, Africa, and Middle
East**

**Travel is legislated in BC, ON, QB
Tico
Compensation Fund**



“TWENTY YEARS FROM NOW YOU WILL BE MORE DISAPPOINTED BY THE THINGS YOU DID NOT DO THAN BY THE THINGS YOU DID DO. SO THROW OFF THE BOWLINES, SAIL AWAY FROM THE SAFE HARBOUR. CATCH THE TRADE WINDS IN YOUR SAILS. EXPLORE, DREAM, DISCOVER.”

MARK TWAIN.

How to know if cruises are your cup of tea

Cruising pros

1. Value

A cruise is package priced.

It includes room, dining, most entertainment, and a slew of extras.

Most travelers spend less money on a cruise than they would on a land vacation of equivalent quality.

2. More Relaxing

Cruise-ship life is less hassle than land tour.

Fewer unexpected problems to solve.

You don't have to spend long hours traveling between destinations in a vehicle.

Families don't get into each other's hair as often as there are many interesting things to do for each person.

3. Pampering

Cruise staffers pamper guests at a higher level than do hotel and other land-tourism personnel.

4. Food

The offerings may not be grand gourmet, but they are superior to what many a traveler eats while on a land vacation.

5. Unpack once

You won't have to keep packing and unpacking as you move from one destination to another.

Cruising Cons

1. Less exploration time

Most of your vacation time will be aboard the ship.

You won't have much time on land to adequately absorb the local culture and everyday life.

2. Fewer destination options

With a sea cruise, you are mainly limited to visiting coastal areas.

Sea cruise ships cannot go inland. Cars, trains and planes can. River cruises follow the river.

3. Lesser sense of place

The fact that you are living on the ship instead of in town means you will gain a lesser sense of place.

You will have fewer chances to interact with the local people and dine in their restaurants at night.



HOW TO CHOOSE A CRUISE

Why are you going on a cruise?

- **Get away**
- **Milestone celebration**
- **Romantic**
- **Family**
- **Adventure**

Who is going on the cruise?

- **Solo**
- **Couple**
- **Adult group**
- **Family with children**



What type of cruise do you want?

- **Sea Cruise specifically Mediterranean**
- **River Cruise**

When do you want to cruise?

- **Spring**
- **Summer**
- **Fall**
- **Winter – Christmas markets**

Budget

- **How much can you afford to spend**
- **Items to include**
 - **Cost of cruise**
 - **Gratuities**
 - **Shore excursions**
 - **Drinks**
 - **Specialty restaurants**
 - **Casino**
 - **Bingo**
 - **Spa treatments**
 - **Internet**
 - **Air fare**
 - **Shopping**
 - **Insurance**
 - **Visa**

Culture of the ship

- **Family friendly**
- **Senior passengers**
- **Adventure**
- **Fun ship**

Size of ship

- **Mega ship 4,000-Plus (RCCL Allure of the Seas)**
- **Large ship 2000 - 3700 (Disney Magic, Celebrity Eclipse)**
- **Mid size ship 1,000 - 2,000 (HAL Eurodam)**
- **Small ship Under 1,000 (Ocean Princess)**
- **Boutique ships – Under 200 (Uniworld River Cruises)**

Style of Dining

- **Early**
- **Late**
- **Free style**



Free style Dining

Size of Table

- **2**
- **4**
- **6**
- **8**
- **Other**



Main Dining Room

FACTORS DETERMINING COST OF CRUISE

- **Cruise line**
- **Ship**
- **Destination**
- **Time of year**
- **Type of cabin**
 - **Inside**
 - **Ocean view (partial, full)**
 - **Balcony**
 - **Suite**
- **Size**
- **Deck**
- **Convenience**

Free on cruises

- **Entertainment**
- **Poolside lounging**
- **Deck sports**
- **How to lessons**
- **Crafts**
- **Aerobic classes**
- **Lectures by experts**
- **Card tournaments**
- **Movies**
- **TV style audience participation games**
- **Religious services**

CABIN SELECTION

Cruise cabin advice to bear in mind

Engine vibrations and noises

You risk losing a good night's sleep if you have a lower-deck cabin near the rear of the ship

Visual obstructions

Be sure your porthole or window ocean view isn't eclipsed fully or partially by a lifeboat or other fixed object

Alarm-clock feet

Avoid rooms adjacent to or under a deck jogging track.

Otherwise, the thumping feet of early morning runners might prematurely awake you.

Other noise polluters

Be certain your room is not located above, below or near dining rooms, bars, nightclubs, pool areas, kitchens, and laundry rooms.

Also don't be next to elevators, high-traffic stairs and busy thoroughfares.

Watching the world go by

If your cabin faces a deck and you like to keep your curtains open in the daytime to enjoy the peaceful ocean, you will likely be distracted by a stream of people walking by your window

Convenient location

Remember, mega ships are several football fields long.

You don't want a cabin in the boondocks.

You want to be reasonably near the ship's core activity area, unless you like to walk a lot.

Smoking

On most ships there is a designated area for smokers. Smoking on balconies is frowned upon.

OTHER CONSIDERATIONS

Bath tubs rather than showers

Connecting cabins

Third and/or fourth berth

Wheelchair accessible

If you are prone to seasickness

- Select a cabin with minimum vertical and lateral movements.**
- Ideally, you want one that's in the middle of the vessel in all directions (front to rear, side to side, and bottom to top).**
- Cabins near the bow and stern can seesaw up and down.**
- Outside cabins sway pendulum style more than inside ones.**
- The same is true for top deck and lower-deck cabins versus mid-level deck cabins.**

LUXURY CRUISE LINES

Crystal - affluent, seasoned travelers desiring refined, not mass-cruising.

Cunard – want traditional English style ocean liner experience or stylish world cruises.

Silverseas Cruises - well-off, experienced world travelers seeking modest-sized cruise ships with sophisticated ambiances and enlightening onboard programs and shore excursions

Regent Seven Seas – Voyager and Mariner are all suite ships

UPMARKET CRUISE LINES

Celebrity – couples with or without children

Holland America – cultured clientele, tend to be older

Azamara Club – boutique cruise ship

Oceania - well-traveled 50+ demographic

MID-RANGE PRICE

Princess – good for couples and families

Royal Caribbean – middle income families (with children and teens) and young couples.

**Norwegian – EPIC, BREAKAWAY & GETAWAY have single cabins for solo travelers (Studios)
- Free style dining**

Carnival - mid-income couples, singles and families

Costa - mid-income European families and young adults

MSC - middle income European families and young adults.

BUDGET

AVOID THEM

Typically, amenities are scarce, cabins are minuscule and spartan, public spaces are cramped and poor-conditioned, food and service is mediocre, and schedules are not always reliable.

Celestyal formerly Louis Cruise Line

Small cruise ships, glorified ferries, which sail Greek Islands. No need to tender.

FAMILY CRUISES

Your children are welcome

Cruise lines like Disney, Royal Caribbean and Carnival earnestly want you to bring your children.

Children age appropriate clubs

Increasing in popularity

More and more families are discovering that shipboard family vacations make peace-of-mind sense.

They eliminate, for example, motel hopping and long stressful rides in cramped cars.

And, the price can be right.

Brilliance of the Seas



WHY A EUROPEAN CRUISE VACATION?

- World-Class European Museums - The art and history of Europe set the tone for the modern world.**
- Amazing European Architecture - Gothic churches, baroque palaces and Renaissance monuments**
- Archeological Treasures - Come face-to-face with the ancient glories of the Greeks and Romans**
- Picturesque Villages - Dense green hillsides layered in mist, majestic mountains towering over villages, pristine crystal blue lakes and terraced hillsides covered with vineyards**

MEDITERRANEAN CRUISES





Red Cruise June 13 -20

Departs Athens, Greece, with stops in Rhodes, Mykonos, Santorini, Kusadasi, and Istanbul.



Orange Cruise June 20 – 27

Departs Istanbul, Turkey, with stops in Mykonos, Valletta, Catania, Naples and Rome.



Green Cruise June 27 – July 4

Departs Rome, Italy, with stops in Florence, Nice, Ajaccio, Ibiza†, Palma de Mallorca and Barcelona



Yellow July 4 -11

Departs Barcelona, Spain, with stops in Cannes, Genoa, Rome, Naples, Chania, and Athens

Adriatic Cruise



Royal Caribbean Cruise 8 days Venice to Venice

Want to cruise the Atlantic and Mediterranean?



17 Day Cruise Departing Mar 21, 2015 on Island Princess - Depart Fort Lauderdale to Madeira, Portugal, next Barcelona, Spain, onto Rome, Naples and Venice in Italy. Ocean view cabin starts \$1400

Ship-size and other cruise pointers

Large versus small ships

Mega-sized cruise ships offer more activities, have less pitch, roll & yaw (vessel movements caused by waves), and are better suited for families and first-time cruisers.

Small cruise ships have a more sophisticated clientele, a more personalized service, are more low-keyed, and visit less touristy ports of call

Peak periods

They usually correlate with school vacations and holidays because those are the times parents can bring their kids – European different than North American.

Typical cruise length

**The most common duration is 7 days.
10 to 14 day cruises are popular with affluent individuals including retirees with lots of time.**

Onboard reservations

**Choice times for facilities like the spa or specialty restaurants are snatched up early.
Any time dining book times.
Reserve your time slots soon after boarding.**

Pack lightly

Cabin storage space is skimpy - and some of it will be taken up by your suitcases (under beds).

Special needs

Cruise lines gladly accommodate special needs (such as religious diets) if notified several weeks or more before departure.
Special needs cabins such as wheelchairs.
Connecting cabins for families.
Doctor on board for emergencies.
Dialysis – on certain ships

Cruise line websites

Major cruise lines websites offer the most thorough and up-to-date information on specific cruise ships.

RIVER CRUISES

Rivers were original highways to transport goods and produce

Calm water cruising

Medieval towns, castles, vineyards along banks

Cruise at day to view scenery, cruise at night if no scenery.

Considered to be nearly all-inclusive - airport transfers, sightseeing, drinks and all tips are included.

Include land tours –various levels of activity

Include beer and wine with some meals

Some companies provide spirits at all times so all-inclusive.

Dock in the centre of town.

What is a River Boat like?

Relatively small vessel - certain maximum size (approx. 12 m wide x 135 m long and three passenger decks high).

No inside cabins –all outside cabins

Cabins on lowest deck tend to have near top of cabin half windows that don't open.

More modern ships have French balconies (full height, opening windows with railing).

Some may have balconies but may then have smaller cabin.

Smaller ships – 36 - 264 passengers

Many do not have a passenger elevator

Most not physically handicap accessible

Things to Watch for When Planning Your River Cruise

Staterooms: Price quoted generally is for cheapest option. Higher up more expensive.

Elevators: Newer ships tend to have them.

Excursions: Good walking shoes. Cobblestones. Ask about pace.

Transfers: If not mentioned, then none. Full address of port terminal to taxi driver.

Smoking: Boats aimed at NA generally ban smoking inside the ship.

Language: preferable to look for a cruise that's English-speaking only

Food: Tend to serve regional food but also provide NA cuisine

Library: If available small and few books of interest. BYOB

Night noise: Traveling through canals at night can be noisy. Bring ear plugs.

Port Charges: Usually additional to basic cruise fare.

River Levels: Too high (flooding) or too low

Comparing Prices:

Important to compare like with like.

Some cruises are all-inclusive.

Others quote less but end up more expensive.

Careful of advertising 2 for 1 and flights included, do the math

If booking air with cruise line it is only responsible to arrange flights and once you have checked-in, airlines are responsible to arrange flights if there are problem flights.

RIVER CRUISES

EUROPE

Danube. Main & Rhine (Europe)

Elbe & Mosel (Germany)

Rhone, Saone & Seine (France)

Douro (Portugal & Spain)

Italy (Po)

RUSSIA

Volga & Neva

UKRAINE

Dnieper

SOUTH AMERICA

Amazon

ASIA

China – Yangtze

Vietnam & Cambodia – Mekong

Myanmar (Burma) - Irrawaddy

EGYPT

Nile

USA

Mississippi

Ohio

Tennessee

Hudson & Potomac

Columbia & Snake

CANADA

St. Lawrence

8 Day Danube River Cruise – Budapest to Passau



13 DAY RIVER CRUISE FROM ZÜRICH TO AMSTERDAM

RHINE & MOSELLE



- 1 = Overnights
- = Start City
- = End City

15 Day Budapest to Amsterdam – Christmas Cruise – Three rivers – Danube, Mains, Rhine



GRAND FRANCE 16 DAY RIVER CRUISE FROM CÔTE D'AZUR TO PARIS – SEINE, SAONE & RHONE



10 Day Tour/Cruise from Lisbon to Porto - Douro



8 Days Venice to Venice - Venice & Gems of Northern Italy - Po River Tour/Cruise



13 Days Moscow to St. Petersburg – Volga



12 Days Odessa to Kiev – Knieper River



16 Days Lima to Lima with tour to Machu Picchu – Amazon, Marañón and Ucayali Rivers



13 Days New Delhi to Kolkata - India's Golden Triangle & The Sacred Ganges 2016 Uniworld Cruises



18 Days China's Cultural Delights - Yangtze

This cruise also available from
Shanghai to Beijing



CHINA


Beijing

BO HAI

YELLOW
SEA

EAST CHINA
SEA

Xian

Nanjing

Shanghai

-  Cruise
-  Air
-  Motorcoach

Shibaozhai
Fengdu
Chongqing

THREE GORGES
DAM

Jingzhou

YANGTZE

Suzhou

Mt. Jiu Hua

Wuhan

Jingdezhen

THREE GORGES DAM
LESSER THREE GORGES

DONGTING
LAKE



Statute Miles
100 200 400

Guilin

Hong Kong

22 Day River Cruise from Bangkok to Hanoi – Mekong – Avalon part of Globus Family



- ① = Overnights
- = Start City
- = End City

14 Day River Cruise from Yangon to Yangon – Irrawaddy River, Myanmar (Burma) - Avalon



12 Days Nile Cairo to Cairo Cruise/Tour



RIVER CRUISES COMPANIES

UNIWORLD

Waivers single supplement on some cruises

Boutique ships

Rated #1 by Conde Nast Traveler



River Queen

AMA WATERWAYS



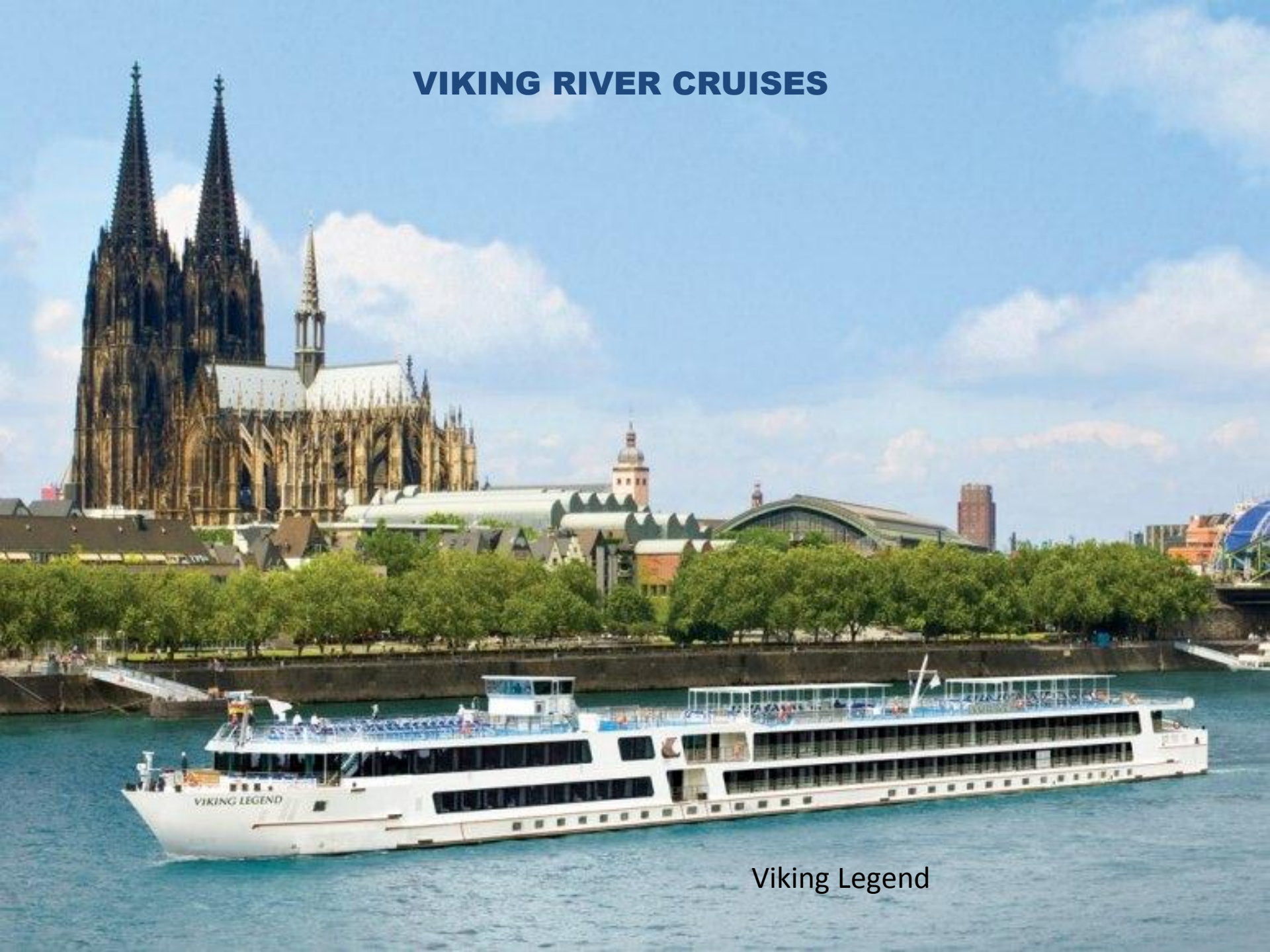
AMA Amacerto

AVALON WATERWAYS GLOBUS



Avalon Panorama

VIKING RIVER CRUISES



Viking Legend

SCENIC TOURS



TAUCK



Abercrombie & Kent Cruises



North American Rivers Cruise Lines



AMERICAN CRUISE LINE

Queen of Mississippi



American Spirit - Alaska

AMERICAN QUEEN STEAMBOAT COMPANY

Largest steamboat in world – 436 passengers



Expect well-traveled passengers aged 50 and up who enjoy Victorian charm, antiques, and dancing to swing or big band music. American Queen Steamboat Company draws history buffs and culture connoisseurs, as cruises themes provide an in-depth immersion into the history and cuisine of America's heartland.

ST LAWRENCE CRUISE LINE

Canadian Empress



**Exclusively trawls the St. Lawrence Seaway
Particularly popular among Americans and
Canadians
Good for senior travelers especially where
medical insurance is a problem.
Excellent regional enrichment and
entertainment**

RIVER BARGING

River barge vacations available in Europe

Offers close up of very small region

Limited to where barge can travel

Travel small rivers so miss major sights in Europe

Cannot travel in fast flowing waters

Slow and leisurely pace in remote regions of Europe

Offer sensational fresh cuisine, wines, great desserts

Complimentary wine and beer with dinner.

Complimentary espressos and coffee

Warm friendly crew

Few passengers so one can be “outsider”

Educational shore tours generally not available

WHEN IS THE BEST TIME TO TRAVEL?

NOW!

Medical condition can change

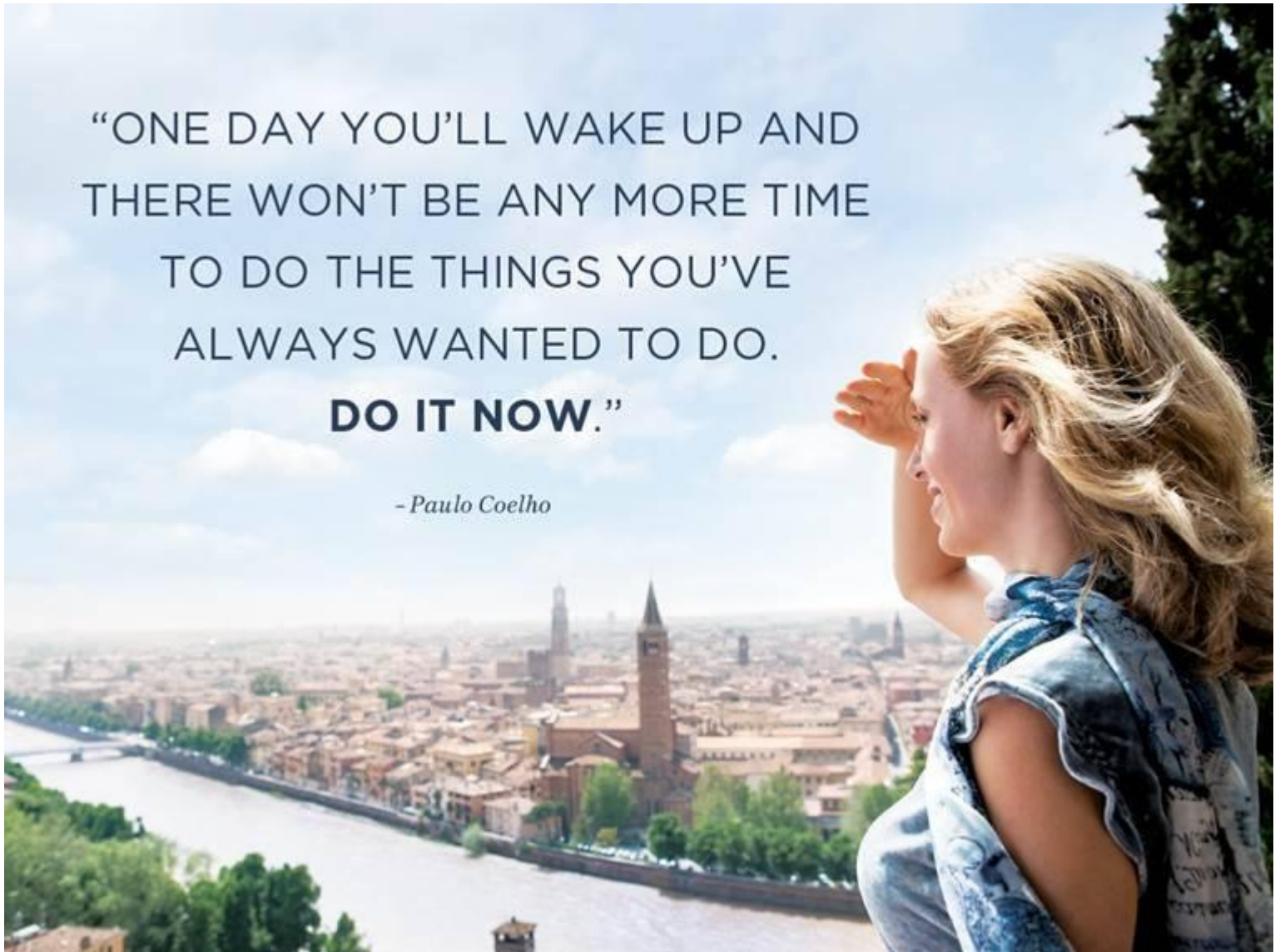
Natural environmental disasters

Political changes occur

“ONE DAY YOU’LL WAKE UP AND
THERE WON’T BE ANY MORE TIME
TO DO THE THINGS YOU’VE
ALWAYS WANTED TO DO.

DO IT NOW.”

- Paulo Coelho



TRAVEL INSURANCE

Medical insurance provides coverage outside province – can be topped up beyond 35 days

Cancellation insurance provides coverage before departure - \$5000/trip/person

Interruption insurance provides coverage after departure - \$5000/trip/person

Cost of insurance depends upon age, pre-existing conditions, destination, length of stay and cost of trip

Suppliers' cancellation policies vary. Crucial that you know it.

Call supplier and insurance company as soon as you are canceling. If delayed, it can be costly.

Thank you for your attendance and participation

**Make sure to fill out the personal form
for a door prize**

**Help yourself to the travel brochures. Some of
the coach tours can be added to our cruise.**

Other individuals talk about cruises

Questions from attendees.